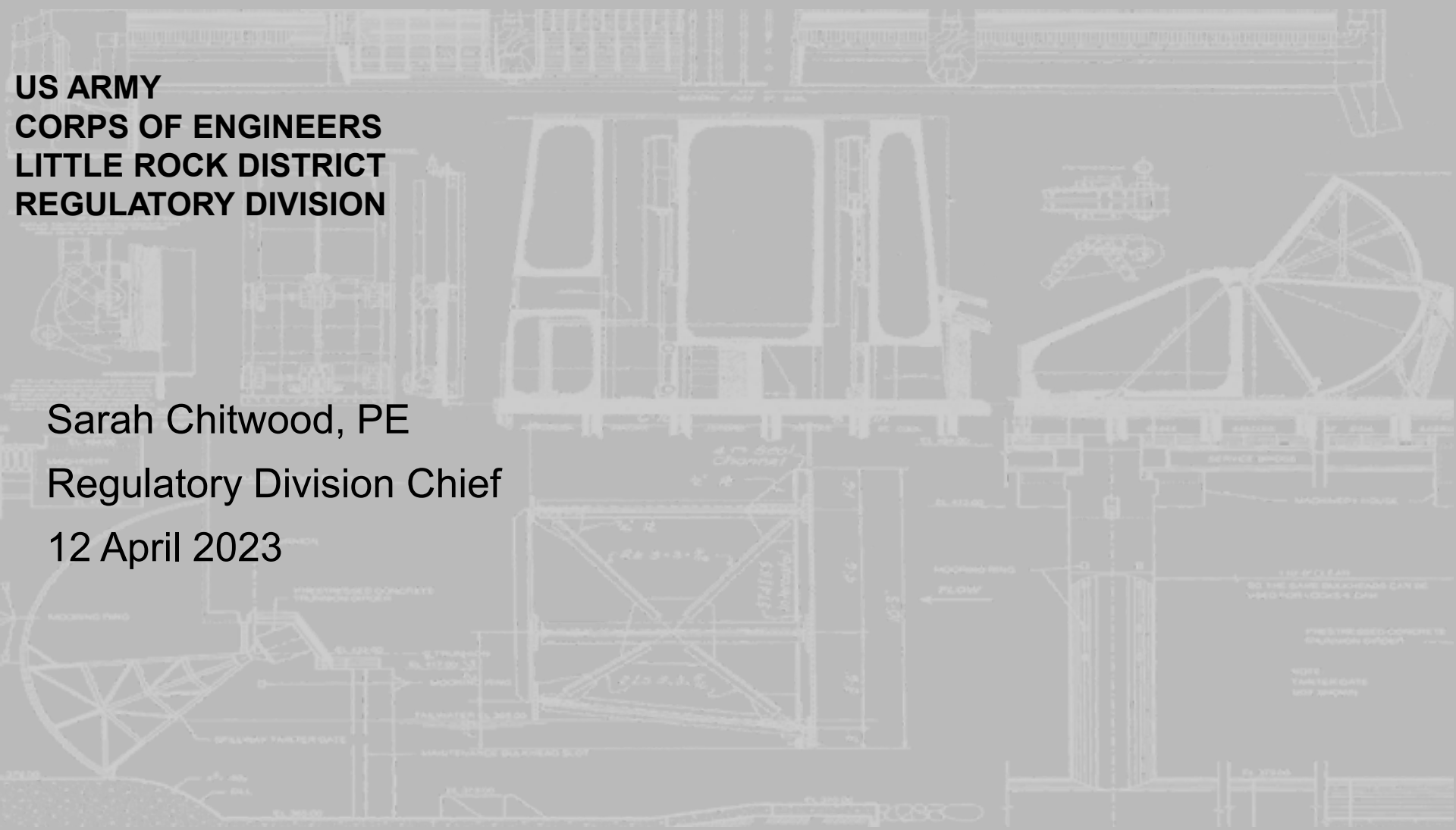


**US ARMY
CORPS OF ENGINEERS
LITTLE ROCK DISTRICT
REGULATORY DIVISION**

Sarah Chitwood, PE
Regulatory Division Chief
12 April 2023



**US Army Corps
of Engineers®**

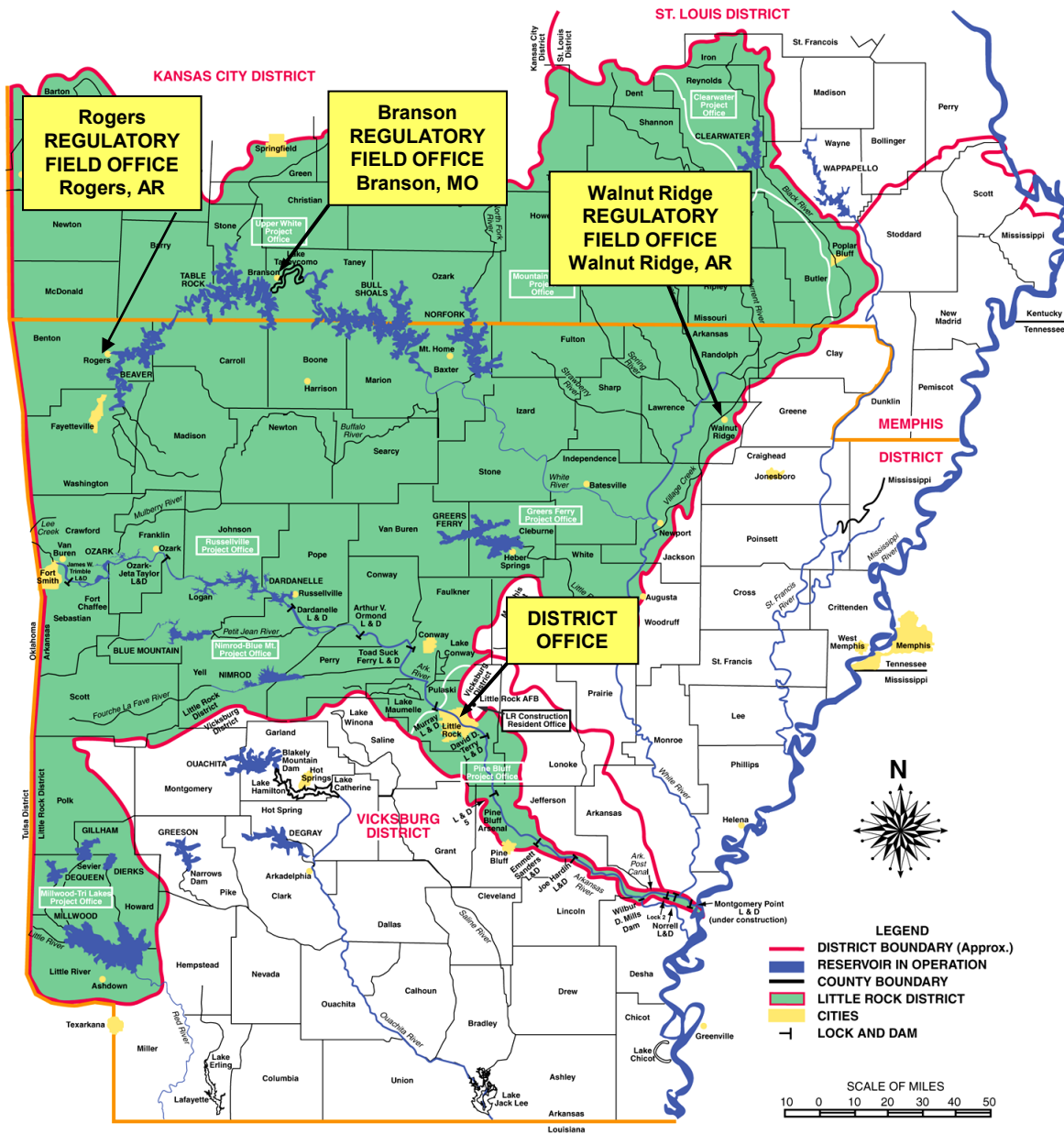


REGULATORY PROGRAM OVERVIEW



US Army Corps
of Engineers[®]

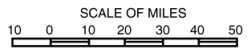




Little Rock District Boundary

LEGEND

- DISTRICT BOUNDARY (Approx.)
- RESERVOIR IN OPERATION
- COUNTY BOUNDARY
- LITTLE ROCK DISTRICT
- CITIES
- LOCK AND DAM



US Army Corps of Engineers®



REGULATORY PROGRAM MISSION

The Regulatory Program is committed to protecting the Nation's aquatic resources and navigation capacity, while allowing reasonable development through fair and balanced decisions.

The Corps evaluates permit applications for essentially all construction activities that occur in the Nation's waters, including wetlands.



US Army Corps
of Engineers[®]



REGULATORY PROGRAM AUTHORITIES

Section 10

of the Rivers and Harbors Act of 1899

Section 404

of the Clean Water Act



US Army Corps
of Engineers ®



REGULATORY PROGRAM UPDATES



US Army Corps
of Engineers[®]



Bipartisan Infrastructure Law

Waters of the United States

Effective 20 March 2023

2022 Agriculture Memorandum

Appendix C

2022 National Wetland Plant List

Automated Wetland Determination Data Sheets

Pay.gov

Environmental Justice

Memorandum of Understanding

US Coast Guard and US Army Corps of Engineers



US Army Corps
of Engineers[®]





Questions?

***Little Rock District Corps of Engineers
Regulatory Division***

501-324-5295

CESWL-Regulatory@usace.army.mil



**US Army Corps
of Engineers** ®



WANT TO KNOW MORE?

Corps of Engineers Headquarters Home Page:

<https://www.usace.army.mil/>

Little Rock District Corps of Engineers Regulatory Division:

<https://www.swl.usace.army.mil/Missions/Regulatory/>



US Army Corps
of Engineers[®]

